

\$228,200 - 2030 Panorama Drive Unit# 528, Panorama

MLS® #10333210

\$228,200

1 Bedroom, 1.00 Bathroom, 671 sqft

Recreational on 1.00 Acres

Panorama, Panorama, British Columbia

This updated one-bedroom, one-bathroom unit in the sought-after Horsethief Lodge at Lower Mountain Panorama Village is the ultimate getaway. Perfectly positioned just steps from the Toby chairlift and Village Gondola, this mountain property offers unparalleled access to year-round adventure. After a day on the slopes or exploring the mountain trails, unwind in the nearby hot tubs, only moments from your door. Nestled among the trees with breathtaking mountain views, this property seamlessly combines comfort, convenience, and natural beauty an opportunity not to be missed. (id:36535)

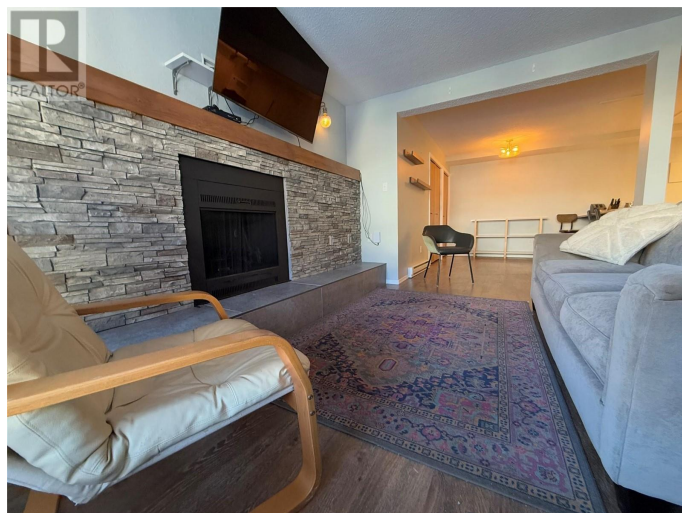
Built in 1987

Essential Information

Listing #	10333210
Price	\$228,200
Bedrooms	1
Bathrooms	1.00
Square Footage	671
Acres	1.00
Year Built	1987
Type	Recreational
Sub-Type	Strata

Community Information

Address	2030 Panorama Drive Unit# 528
Subdivision	Panorama



City	Panorama
State	British Columbia
Zip Code	V0A1T0

Amenities

Amenities	Recreation Centre, Whirlpool
Parking	Underground
View	Mountain view

Interior

Appliances	Refrigerator, Dishwasher, Dryer, Range - Electric, Microwave, Washer
Heating	Electric Baseboard heaters, See remarks
Fireplace	Yes
Fireplace Fuel	Wood
Fireplace Type	Conventional
# of Stories	1

Exterior

Exterior	Cedar Siding, Stucco, Wood siding
Roof Material	Cedar shake
Roof Style	Unknown

Additional Information

Zoning	Unknown
--------	---------

Listing Details

Listing Office	Courtesy Of Megan Arn Of Royal LePage Rockies West
----------------	--

MLS®, REALTOR®, and the associated logos are trademarks of The Canadian Real Estate Association.