

\$799,900 - 974 Swansea View Road, Windermere

MLS® #10359087

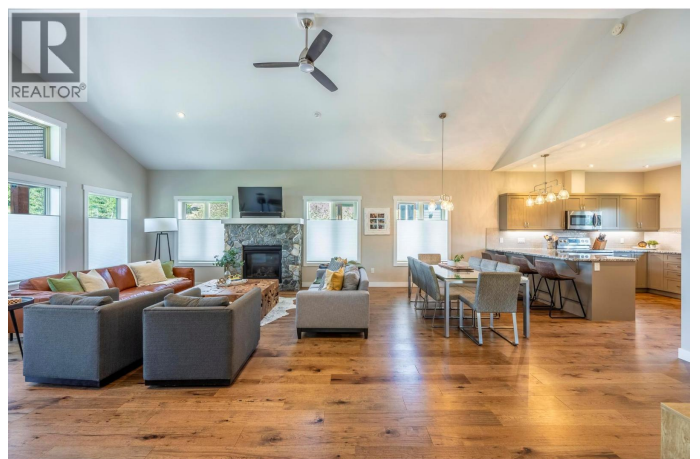
\$799,900

3 Bedroom, 3.00 Bathroom, 2,045 sqft

Single Family on 0.46 Acres

Swansea View, Windermere, British Columbia

Discover this beautifully cared-for home, proudly owned by just one family and built by the reputable Holland Creek Homes. Perfectly positioned on just under half an acre, this property offers both privacy and year-round natural beauty. Inside, youâ€™ll find 3 spacious bedrooms and 3 full bathrooms, thoughtfully designed for comfort and function. The open-concept upper floor boasts vaulted ceilings, large windows that flood the space with light, and a stylish propane fireplace with a stunning stone mantel. The kitchen features granite countertops, modern lighting, and a seamless flow for both everyday living and entertaining. Step outside and enjoy sunrises over the mountains from the back deck, or watch sunsets and storms roll in from the covered front deck. A serene creek meanders along the edge of the property, creating a peaceful ambience. The backyard is an entertainerâ€™s dream with a hot tub, a large fire pit, and ample space for yard games or a garden. The oversized double garage offers ample space, while the homeâ€™s quality craftsmanship and pride of ownership shine through in every detail. Just minutes from Windermere Lake, the vibrant town of Invermere, and endless outdoor adventures like skiing, golfing, biking, and hiking, this home puts the best of the Columbia Valley at your doorstep. Whether youâ€™re seeking a full-time residence or a mountain getaway, this property combines small-town charm with upscale finishes in a setting youâ€™ll never



want to leave. (id:36535)

Built in 2019

Essential Information

Listing #	10359087
Price	\$799,900
Bedrooms	3
Bathrooms	3.00
Square Footage	2,045
Acres	0.46
Year Built	2019
Type	Single Family
Sub-Type	Freehold

Community Information

Address	974 Swansea View Road
Subdivision	Swansea View
City	Windermere
State	British Columbia
Zip Code	V0B2L0

Amenities

Amenities	Golf Nearby, Recreation, Schools, Shopping, Ski area
Features	Cul-de-sac, Level lot, Private setting
Parking Spaces	8
Parking	Attached Garage
# of Garages	2
View	Mountain view, View (panoramic)
Is Waterfront	Yes
Waterfront	Waterfront on creek

Interior

Appliances	Refrigerator, Dishwasher, Dryer, Range - Electric, Microwave, Washer
Heating	Electric Forced air, Heat Pump
Cooling	Heat Pump
Fireplace	Yes
Fireplace Fuel	Gas

Fireplace Type	Unknown
# of Stories	2

Exterior

Exterior	Wood, Other
Exterior Features	Landscaped, Level
Roof Material	Asphalt shingle
Roof Style	Unknown

Additional Information

Zoning	Unknown
--------	---------

Listing Details

Listing Office	Courtesy Of Geoff Sherlock and Lindsey Sherlock Of RE/MAX Invermere
----------------	---

MLS®, REALTOR®, and the associated logos are trademarks of The Canadian Real Estate Association.